

## PGY2 EMERGENCY MEDICINE PHARMACY RESIDENCY PRECEPTORS

### **Stephanie Barré, PharmD | PGY2 Emergency Medicine Residency Program Director**

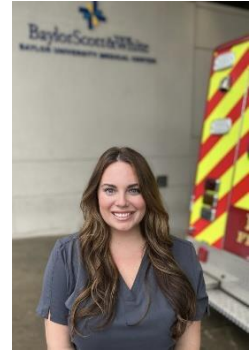
**Education:** University of Louisiana at Monroe

**Training:**

PGY1 Pharmacy Practice Residency, Methodist University Hospital, Memphis, TN

PGY2 Emergency Medicine Residency, Medical University of South Carolina, Charleston, SC

**Practice Interests:** anticoagulation reversal, toxicology, neurologic emergencies



### **Paige Baize, PharmD, BCPS | PGY2 Emergency Medicine Residency Program Coordinator**

**Education:** Texas Tech University Health Sciences Center

**Training:**

PGY1 Pharmacy Practice Residency, Texas Health Presbyterian, Dallas, TX

PGY2 Critical Care Residency, Texas Health Presbyterian, Dallas, TX

**Practice Interests:** hemodynamic support, anticoagulation/reversal, analgosedation, toxicology



### **Katie Weigartz, PharmD, BCPS | PGY1 Pharmacy Residency Program Director**

**Education:** Auburn University

**Training:**

PGY1 Pharmacy Practice Residency, University Health Shreveport, Shreveport, LA

PGY2 Emergency Medicine Residency, The Ohio State University Wexner Medical Center, Columbus, OH

**Practice Interests:** cardiovascular emergencies, neurologic emergencies, disaster preparedness



### **Trey Van Dyke, PharmD**

**Education:** Samford University

**Training:**

PGY1 Pharmacy Practice Residency, Medical City Plano, Plano, TX

**Practice Interests:** Infectious disease, neurologic emergencies, cardiovascular emergencies

